

Milano Section

Location: Via Mario Bianco, 9 - 20131
Milano

Contact person: Alberto Marcellini
e-mail: alberto.marcellini@idpa.cnr.it
Tel: (+39) 02-28311425
Fax: (+39) 02-28311442

Research Laboratories hosted by University departments

Palynology and Palaeoecology

Lab. <http://www.disat.unimib.it/palinologia>

Location: c/o Dipartimento Scienze
dell'Ambiente e del Territorio, Università Milano
Bicocca, Piazza della Scienza 1, 20126 Milano

Electron Microscopy and Microanalysis Lab.

<http://www.idpa.cnr.it/labsem.htm>

Location: c/o Dipartimento Scienze della
terra, Università di Milano, via Botticelli 1,
20133 Milano

Padova Section

Contact person: Rocco Rella
e-mail: rocco.rella@idpa.cnr.it
Location: Corso Stati Uniti, 4 - 35100
Padova
tel: (+39) 0498295668
Fax: (+39) 0498295662

Dalmine Section

Contact person: Cesare Ravazzi
e-mail: cesare.ravazzi@idpa.cnr.it
Location: via Pasubio, 5 - 24044 Dalmine
tel: (+39) 0356224263
Fax: (+39) 0356224260



**Institute for
the Dynamics of
Environmental
Processes of the
National Research
Council of Italy**

IDPA-CNR

www.cnr.it
www.idpa.cnr.it

Director: Carlo Barbante
carlo.barbante@idpa.cnr.it

Central Section

Location: Calle Larga S. Marta,
Dorsoduro 2137
30123 Venice
Tel: (+39) 0412348505 - 47
Fax: (+39) 0412578549

The **National Research Council (CNR)** is a *public national research organisation* founded in 1923, whose primary role is to carry out **advanced basic and applied scientific and technological research**.

The **Institute for the Dynamics of Environmental Processes (IDPA)** of the CNR was founded in 2001 thanks to a restructuring process that grouped previously existing CNR Institutes and Centers located in both Venice and Milan, i.e., the "*Center for Studies on Environmental Chemistry and Technologies*" in Venice, the "*Center for Studies on Alpine and Quaternary Geodynamics*" in Milan, and a part of the "*Institute for Research on Seismic Risk*" in Milan.

The idea at the basis of the clustering was to give birth to an **interdisciplinary institute** with the main objective of **studying the Earth System** not necessarily from specific thematic points of view, but from wider perspectives to take advantage of both the interdisciplinary nature of the combined knowledge already available and the synergies between the various disciplines.

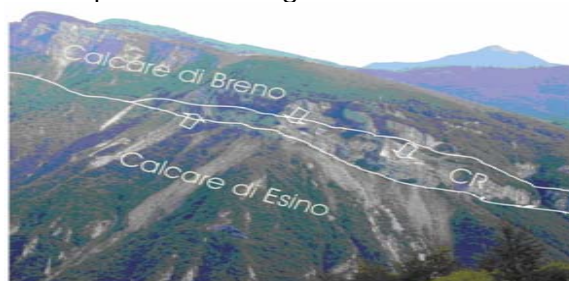
Disciplinary area: Earth and Environmental Sciences

Main research Themes

- Environment and evolution of the environmental systems:

The topics include but are not limited to the following themes: Earth, paleobiological and paleoclimate dynamics; morphogenesis and evolution of the land; anthropogenic pollution and contamination; environmental hazard

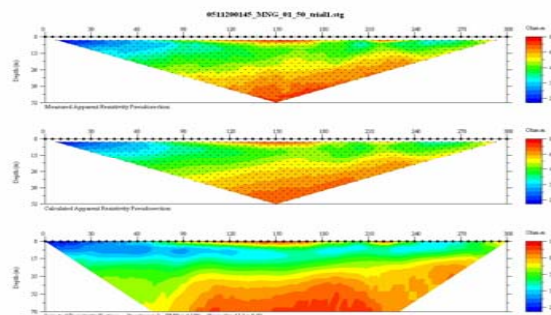
scenarios; mobility and transport of the microcomponents throughout the environment.



CR=Calcare Rosso
 □ = Cave abbandonate (a cielo aperto ed in galleria)
 — = Contatto stratigrafico

- **Methods and techniques for studying and representing the Environment:**

This includes the study and definition of innovative models for representing environmental phenomena both in space and time; cartography and geographic information systems; archeometry, geoarcheology and artifact degradation; applied geophysics; and Human-environment interaction



- Methods for environmental monitoring, protection and prevention

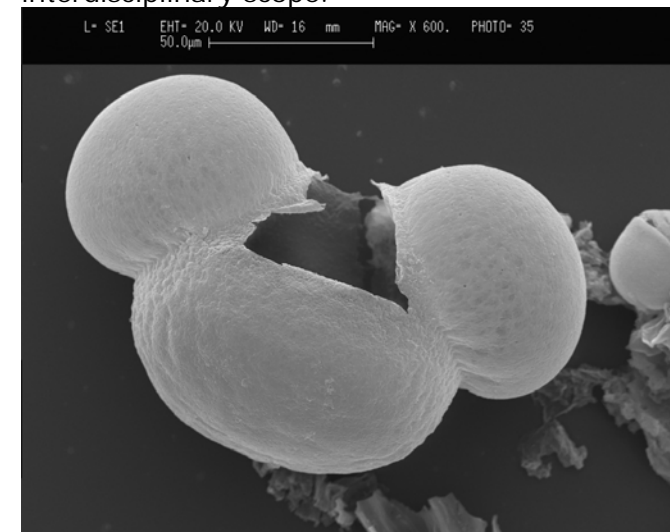
The topics include environmental geophysics; environmental chemistry and magnetism.

- Dissemination, and exploitation

This includes production of publications, teaching, organization of exhibitions, lectures, and acting as project consultants.

IDPA is **one of the CNR centers of excellence for both basic and applied research in the environmental field**, as testified by the variety and quality of the publications in qualified international scientific journals, and the participation in national and international scientific projects.

The **sophisticated instrumentations of the laboratories** of the IDPA, together with the expertise available, have been the base requirements for participating and leading international research projects with a wide and interdisciplinary scope.



SEM picture of fossilized *Abies* pollen from the archeological site of Lavagnone (Bronze Age, North of Italy)